

The Wrybill

Newsletter of the Canterbury Region,
Ornithological Society of New Zealand

Regional representative: Jan Walker
305 Kennedys Bush Road, Christchurch 8025
Ph 03 322 7187. Email: shesagreen@gmail.com



August 2016

What's on at OSNZ Canterbury:
August to October 2016

Indoor Meetings

Evening Meetings take place at 7.30 pm on the last Monday of the month at Mahaanui Area DOC Office, 31 Nga Mahi Road, off Blenheim Road, Sockburn. Plenty of parking is available.

August 29 - Biz Bell from Wildlife Management International Ltd will talk on "The Real New Zealand 'All Black' - Introducing the Black Petrel, *Procellaria Parkinsoni*". Biz will share her experiences of the endemic Black Petrel from her research that she has been undertaking on Great Barrier Island/Aotea for over 20 year and more recently on Hauturu/Little Barrier Island.

September 26 - A talk by the Orana Park native animal team spokesperson who will speak on "Birds and Bird Breeding Being Carried out at the Park".

November 7 - To be confirmed a little closer to the time.

Field Trips

August 20 - A fieldtrip to see the Orana Park birds. This will cost \$5 per person. Meet in the carpark at Orana Park at 10am.

September 3/4 - Global Wader Survey. This will be our chance to contribute to the global count as well as seeing how many different species we can find in Canterbury. This trip will be organized by Bev. More details to come.

October 15 - Bushbird survey at Tokoroa Bush on Banks Peninsula. This will be a good chance to see what effect the predator control there has had. Meet at the Halswell Bowling Club at 9am to carpool.

Rambles

Wednesday 17 August - N.C.F Park, Courtenay Place, Kaiapoi. The area includes a small lake with waterfowl etc, open grassland and a walk along the Kaiapoi River. We will meet at the park entrance at 10am. Please note the change of day to Wednesday, and the change of start time to 10am, for this ramble.

Tuesday 13 September - Westlake Reserve in Halswell. Meet at 9:30 am in the carpark.

Tuesday 11 October - Botanic Gardens. Meet at 9:30am at the Armagh Street bridge carpark.

Please let Bev know if you plan on attending in case of a change of time or location.

Birds NZ Conference

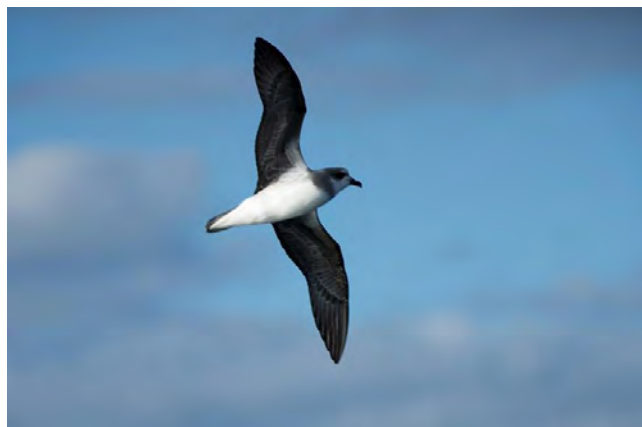
The Birds NZ annual conference and AGM ran over the Queen's Birthday weekend in Napier 3rd – 6th June. I was lucky enough to attend the entire conference and was treated to a plethora of talks on a wide range of subjects including a significant number on the ongoing seabird research being carried out around New Zealand. Highlights for me included Emma Williams' talk on "Seasonal Movements in Australasian Bittern" which focused on movements of known bittern in the Hawke's Bay but also included post-release dispersal and survival of Bittern that had been brought into care due to injury or starvation. This was of particular interest to me due to the release of the two juvenile female Bittern found in Travis Wetland. Sadly they have both since died along with all seven individuals that Emma has tracked post-release. This highlights that post-release survival in Bittern is very low, usually with birds dying of starvation. It also highlights that there is the possibility that our release protocols require updating or changing to hopefully increase this survival rate. Another was by longtime contributor Murray Williams speaking on "Are Grey Ducks changing, or is it just our perceptions of them?". He studied many thousands of wings, feathers and skins of ducks brought in by hunters to try and identify key characteristics of Grey Duck, Mallard and their hybrid's identification features and whether hunters reports of what they had shot were accurate. Ultimately he discovered discrimination by Fish and Game hunters were generally pretty accurate (roughly 80% accurate) which was not far behind his own expert knowledge identification accuracy rate of approximately 90%. Furthermore 'pure' Grey Ducks, i.e. all those that are for all intents and purposes Grey Ducks were much more wide spread than their Nationally Critical status would suggest with recorded rates of greater than 10% across all regions, with strongholds in Northland,

Southland and the West Coast. One final interesting talk was by Hēmi Whaanga who spoke to us about "Indigenous Methods of Naming Native and Introduced Bird Species of Aotearoa". This was interesting to me as he discussed the complicated methods with which the specialized panel came together to decide on common Maori names for species which in reality have many localized names. Tui for example which we consider as the only Maori name is in fact one of 30+ different localized names for the same bird. Furthermore many birds which have only recently arrived or have been introduced don't have associated Maori names and thus require loaned words or words which represent a literal translation of their common English name to be decided upon. An interesting thought that many of our accepted Maori names for birds are in fact just one whanau or iwi's word which has been proliferated into common knowledge.

Monday was the dedicated fieldtrip day where groups could embark on a number of different trips that tickled their fancy. On offer were a trip to the local Clive River, including the local Waitangi wetlands a local hotspot for Bittern (we saw 4 on a single morning!), Black Fronted Dotterel and Black-fronted Terns, and a trip to Boundary Stream, looking for North Island Kokako and Kaka among others. In addition to this Russell Cannings had organised a full-day pelagic which I was fortunate enough to endeavor upon. We couldn't have asked for much better weather, it was a clear mostly calm day which allowed us to travel out to ~30 nautical miles on the edge of the continental shelf aiding our birding efforts. In total we saw 5 species of Albatross including great views of Black-Browed, Northern and one or two Southern Buller's and tens of White-capped Albatross, a single Short-tailed Shearwater, Fluttering Shearwaters and many Common Diving Petrels which were a lifer for me. But the highlight of the day was a Soft-plumaged Petrel,

The Wrybill - August 2016

a highly pelagic species which was a first record for the Hawke's Bay, which treated us to fly-bys of the boat for over ten minutes.



Soft-plumaged Petrel, showing its characteristic dark underwing, and dark nape and head. A first record for the Hawke's Bay. Photo: Les Feasey

Also of note were some Common Dolphins, Mako and Blue sharks and a 15.3kg Kingfish which I was lucky enough to pull up from the depths after a ten minute long slug fest. On the way back in we caught up with a pod of approximately 7 Orca including females and calves near to Cape Kidnappers.



Me with the prized Kingfish, with a Buller's and White-capped Albatross in the background. Photo: Russell Cannings

All in all the conference was a valuable and rewarding experience with many friends made and much learnt about the state of bird research in New Zealand. I would highly recommend it for anyone wishing to attend next year's in Te Anau.

By David Thomas

Recent Events Roundup

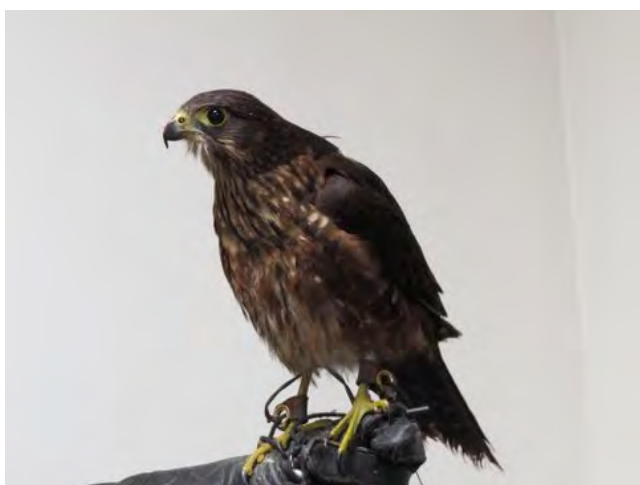
After May's fieldtrip to Kaikoura (see page 5), members spent the June trip a bit closer to home, participating in the annual Winter Wader Count at Lake Ellesmere. Seven White Herons were seen on the count, as well as thirteen Cattle Egrets. Other interesting birds included two Gull-billed Terns, and one Wrybill and Bar-tailed Godwit. In July, we once again participated in a count, this time at the Ashubrton Lakes. Lake Heron was the place to be bird wise – it contributed over half of the total count, including nine Grey Duck, ten out of the eighteen Crested Grebes, and two Pipits as well. Scaup were the most numerous species, with almost 2000 being recorded. For full results of both counts, please refer to the spreadsheets at the end of the newsletter.

Mike Ashbee is a Canadian birder who started bird photography to get the ID shots. The interest grew and his goal now is to capture the best image possible of every species. Mike moved to New Zealand last year and spoke at our May meeting. He shared many amazing images of North American birds plus some of the New Zealand species he's photographed so far. Mike credits the quality of his images partly to quality equipment but also to patience with plenty of time in the field observing bird behaviour a key. Luck also plays a part! As he shared the images he also shared the stories

The Wrybill - August 2016

behind them and there were plenty of great tips to be had both for novice bird photographers and the more experienced.

In June we were treated to a talk by Vikki Smith and Rob Lawry of the Malborough Falcon Trust. What made this talk so special was the presence of the falcons Tappe and Hera in their first ever advocacy talk. Tappe is the first trained pigeon-control falcon in New Zealand. He has been in the news over the past six months or so for the work he and his handlers are doing at the University of Canterbury. Hera is currently being trained for similar work. While the two falcons delighted the audience with their mere presence, Vikki and Rob gave an interesting and informative talk covering the biology and behaviour of falcons, the risks to the species, the work of the Malborough Falcon Trust, the training of Tappe and Hera, and details of their pest control work in Canterbury.



Tappe the New Zealand Falcon at June's evening meeting. Photo by William Harland.

July's meeting started early with a mid-winter pot-luck. Jan Walker, our RR, then presented Peter Reese, a former Canterbury member who has just returned to the region after many years in Wellington, with a Meritorious Service Award. This recognised his many contributions to birding, especially his banding project in Wellington and his support of young birders.

We also celebrated the achievements of Sheila Petch, one of Canterbury's oldest members who was due to celebrate her 89th birthday. Sheila's contributions to birding are legendary, including her involvement in banding and other research projects plus her famous 'firsts' such as the Long-toed Stint sighting. Even more appreciated was her enthusiasm and encouragement of others, especially new birders. William Harland, Canterbury's youngest member, then gave a talk showcasing some of the bird photographs he has taken in Canterbury and on Stewart and Ulva Islands. An image of a Rifleman eating a caterpillar was an audience favourite, particularly because Riflemen are so hard to photograph. The meeting concluded with Brian Darlow sharing photos he'd taken on a visit to the United Kingdom.



Peter Reese receiving his Meritorious Service Award. Photo by Craig Alexander.

The mid-week rambles, ably led by Bev Alexander, continue to be well-attended. They are a great introduction to birding locations around Christchurch. In June twelve rambblers visited Lake Roto Kohatu. This site, close to the city, is a reliable spot for Crested Grebes. Two pairs were observed along with a good mix of waterfowl, gulls, passerines, and numerous

Little Pied Cormorants. It was good to see some less familiar faces during July's trip to Sandy Point on the Avon-Heathcote Estuary. All told thirty two separate species were spotted, although sadly neither the Hudsonian Godwit nor the Whimbrel were amongst them.

By Sandra Wallace and Eleanor Gunby

Kaikoura Fieldtrip Roundup

For May's fieldtrip, eight members drove up to Kaikoura to spend a Saturday afternoon seabird watching from the shore. At Point Kean carpark, we met up with Ric Else and Hazel Watson, two visiting birders from the UK who are passionate about seabirds. Before we even left the carpark, we were treated to views of a New Zealand Falcon harassing some gulls, definitely not what we were expecting to see flying over the ocean! Although windier conditions would have been preferable, we still managed to observe a variety of different species thanks in a large part to Ric's excellent ID skills. We only saw one each of Buller's Mollymawks, Northern Royal Albatrosses and Wandering Albatrosses, but more Shy Mollymawks and Northern Giant Petrels were observed. Other highlights included both Sooty and Fluttering Shearwaters, an Arctic Skua, and two Australasian Gannets.

After about two hours spent at Point Kean, we all drove around to South Bay in hopes of spotting some Little Blue Penguins starting to come ashore. Although it was perhaps a little earlier than ideal, we still managed to see one, as well as another Skua.

All in all, it was a great trip and a really good chance to get some seabird spotting, especially for those of us for whom boats aren't an option!

By Eleanor Gunby

Recent Sightings

Just a friendly reminder that in his new role as Regional Recorder, Nick Allen has now taken over compiling these recent sightings. If you have any sightings of interest, please feel free to send them directly to him

Canterbury and West Coast Bird Report May/June 2016

This report covers the period 1st May to 30th June and is compiled from reports posted onto the Birding NZ internet discussion site and eBird. Your regional recorder would welcome news of any interesting bird sighting, unusual behaviour or searchable sources of other sightings. Email christchurchnzbirder@gmail.com.

Key to letters after bird names:

A = all reported occurrences (for rare/scarce species or escaped/released species etc)

S = significant numbers/occurrences (for species regularly encountered in the regions)

V = vagrant

Canada Goose (S) Taranaki Creek Paddocks, Waikuku: about 300 30/5 BA.

Cape Barren Goose (A) Lower Styx Road: 12 28/5 Rowey. St Annes Lagoon: 1 20/6 BA.

Mute Swan (A) Cooper's Lagoon: 7 8/5 BA, 8 25/6 BA. Pegasus Wetlands: 2 ad 1 imm 10/5 BA; 2 14/5 BA. Bromley Oxidation Ponds 1 6/6 KR. Drain Road, Lake Ellesmere: 1 25/6 BA. Yarr's Bay, Lake Ellesmere 8 25/6 NA, RB.

Fisherman's Point, Lake Ellesmere: 2 25/6 BA. Prattley Road wetlands (near Temuka): 4 ad & 3 imm 28/6 PS&JS.

Paradise Shelduck (S) St Annes Lagoon 170 4/6 NA.

Australasian Shoveler (S) Lake Forsyth: 190 2/5 EG. Pegasus Wetlands: 60 10/5 BA. Kaikoura Oxidation Ponds: 120 20/5 RE & HW. St Annes Lagoon 80 4/6 NA. Kaiapoi Lakes: 68 14/6 BA.

Grey Teal (S) Lake Forsyth, Little River end: 250 2/5 EG. Washdyke Lagoon: 773 25/5 PS, 345 24/6 PS. St Annes Lagoon 100 4/6 NA.

Muscovy Duck (A) The Groynes: 4 8/5 BA, 10

The Wrybill - August 2016

14/6 BA.

New Zealand Scaup (S) Styx Mill Walkway 47
4/6 SLLT. Kaiapoi Lakes: 63 14/6 BA.

Indian Peafowl (A) Bromley Oxidation Ponds 1
near farm sheds 2/6 KR. Okoura Farm, near
Birdlings Flat: 1 with last Turkey on farm 17/6
KR.

Australasian Crested Grebe (A) Caton's Bay,
Lake Forsyth: 2 2/5 EG; 3 ads 1 juv 4/5 BA.
Kaituna Lagoon: 1 4/5 BA. Coopers Lagoon: 1
8/5 BA, 1 25/6 BA. Kaiapoi Lakes: 1 14/5 BA, 1
26/5 PW. Kellands Pond (Twizel): 2 14/5 JW.
Lake Tekapo, southern end 1 4/6 SS. Harts
Creek: 2 11/6 BA. Roto Kohatu Reserve: 4 14/6
BA, JW.

Yellow-eyed Penguin (A) Head of Flea Bay: 1
found injured and unable to walk, taken into
care 15/5 LB.

Little Penguin (S) Sea off Kaikoura Railway
Station: 8 at dusk 8/5 RE.

White-capped Albatross (S) Sea off Goose Bay:
145 18/5 RE.

Antarctic Fulmar (S) Hokitika Water Treatment
Plant: 1 picked up moribund by a dog-walker,
taken into care, later died 20/5 SL

Soft-plumaged Petrel (A) Point Kean: 1 flew past
afternoon 21/5 RE & HW.

Fluttering Shearwater (S) Sea off Kaikoura Town
waterfront: at least 2,000 rafting offshore 14/5
RE & HW.

Grey-backed Storm Petrel (A) Albatross
Encounters pelagic: 1 24/6 MA,RL.

Little Black Shag (A) Pegasus Wetlands: 2 13/6
BA. Taranaki Stream: 1 27/5 PW.

Spotted Shag (S) Point Kean: 500 11/5 RE.
Barney's Rock (S of Kaikoura): 1,689 came in to
roost before dusk 12/5 RE & HW; 902 23/5 RE &
HW.

White Heron (A) Ashley Estuary: 1 1/5 NA; 1 3/5
BA; 1 6/5 JH; 1 7/5 BA; 1 14/5 BA; 1 3/6 BA.
Taranaki Stream, Waikuku: 1 13/6 BA. Kaituna
Lagoon: 1 2/5 EG; 1 4/5 BA. Lake Forsyth: 1 4/5
BA. Seafield Lagoon, Brooklands: 1 17/5 BA.
Kahutara River Mouth 1 4/6 NA. Drain Road,
Lake Ellesmere: 1 25/6 BA. Yarr's Bay, Lake
Ellesmere: 1 25/6 NA, RB. Timberyards Road,
Lake Ellesmere: 1 25/6 BA. Linwood Canal 1 29/6
GB.

White-faced Heron (S) The Lake Road: 108 8/5
BA.

Little Egret (V) Lake Forsyth: 1 2/5 EG; 1 4/5 BA;
1 23/5 Rowey; 1 28/6 AC.

Reef Heron (A) Point Kean: 1 4/5 RE & HW; 1
9/5 RE; 1 4/6 NA; 1 6/6 NA, 1 20/6 BA. Goose

Bay: 2 18/5 RE. Barney's Rock: 1 23/5 RE & HW.
Near New Wharf, Kaikoura: 1 24/5 RE.

Cattle Egret (A) The Lake Road: 5 8/5 BA, 10
19/5 EG, 11 22/5 KHa, 13 25/6 BA. Cants Road: 8
23/5. West of Templeton: 5 15/5 AC. Kaiapohia
Road, Waikuku: 1 26/5 BA. Mahinapua Walkway
(S of Hokitika): 5 24/5 NW

Royal Spoonbill (S) Ataahua: 25 2/5 EG. Ashley
Estuary: 4 14/5 BA; 5 14/5 EG; 5 3/6 BA, 5 21/6
BA. Spider Lagoon: 2 28/6 PS&JS.

Spotless Crake (A) Pegasus Wetlands: 1 6/6 PW.

Marsh Crake (A) Ashley Estuary: 1 6/5 JH.

Australian Coot (S) Pegasus Wetlands: 23 10/5
BA. Kellands Pond (Twizel): 1 14/5 JW. Styx Mill
Walkway 28 4/6 SLLT. Northbrook Ponds: 32
22/6 BA.

Black Stilt (A) Ashley Estuary: 1 1/5 NA; 1 7/5
BA; 1 14/5 BA, EG; 1 3/6 BA, 1 21/6 BA. Corner
Prattley and White Roads (near Temuka): 1 28/6
PS&JS.

Banded Dotterel (S) Kaikoura Airfield: 54 12/5
RE & HW; 64 14/5 RE; 70 14/5 BNZC. Near
Kaikoura Railway Station: 216 23/5 RE & HW.

Black-fronted Dotterel (A) St Anne's Lagoon: 32
14/5 BNZC; 28 4/6 NA; 43 9/6 DB, 8 20/6 BA.
Spider Lagoon: 5 28/6 PS&JS.

Whimbrel (A) Ashley Estuary: 1 7/5 BA. Taranaki
Creek Paddocks 1 30/5 BA; 1 3/6 BA. Linwood
Paddocks: 1 29/6 GB, SP, JW.

Bar-tailed Godwit (S) Ashley Estuary: 11 14/5
EG; 14 14/5 BA, 15 21/6 BA. Taranaki Creek
Paddocks 77 30/5 BA; 87 3/6 BA (very high
winter counts for the Waikuku area, let alone
large numbers of birds away from the nearby
estuary).

Hudsonian Godwit (V) Linwood Paddocks: 1
27/6 AC.

Turnstone (A) Point Kean: 13 1/5 RE; 6 11/5 RE;
6 14/5 RE & HW; 3 17/5 RE & HW.

Arctic Skua (S) Sea off Kaikoura Railway
Station/Sewage Works/Kaikoura Township: 8 at
dusk 8/5 RE; 26 10/5 RE & HW; 2 14/5 RE & HW;
46 ("all seemed to be immatures") 20/5 RE &
HW.

Red-billed Gull (S) Point Kean: 500 9/5 RE.

White-winged Black Tern (A) Bromley Oxidation
Ponds: 1 watched for 20 minutes late afternoon
21/5 LP; 1 4/6 BA; 1 6/6 KR; 1 27/6 AC.

Black-fronted Tern (S) Brooklands Lagoon: 120
early afternoon 1/5 KH. Ashley Estuary: 43 soon
after dawn 14/5 BA.

White-fronted Tern (S) Point Kean: 175 9/5 RE.

Morepork (S) Fyffe/Palmer Reserve (Kaikoura):
1 at 6pm 14/5 RE & HW. Ashley Gorge Road: 2

24/5, KHa.

New Zealand Falcon (A) Point Kean: 1 14/5 RE, HW & BNZC. Donegal House (Kaikoura): 1 chasing starlings coming into roost at dusk 14/5 RE & HW. Ludstone Road, Kaikoura: 1 18/5 RE. Near Kaiapoi: 1 (possible) 18/5 PW. Kaitorete Spit, near Crescent Island: 1 25/6 PC.

Sulphur-crested Cockatoo (S) Prices Valley: 40 (though possibly up to 60) 4/5 BA.

Tui (S) Takamatua Bay: 5 in big gum trees 17/6 KR.

Rook (A) Kaikoura Peninsula 1 9/6 JG

European Starling (S) Donegal House (Kaikoura): 2,000 coming into roost at dusk 14/5 RE & HW.

Australasian Pipit (S) Ferrymead Historic Park: 1 1/5 NA. Kaikoura Airfield: 5 12/5 RE & HW.

Observers:

BA Bev Alexander, NA Nick Allen, MA Michael Ashbee, LB Lisa Babcock, GB Grahame Bell, BNZC Birds New Zealand Canterbury, RB Ryan Brooks, DB Dave Boyle, AC Andrew Crossland, RE Richard Else, JG Jesse Golden, EG Eleanor Gunby, JH Jill Hanna, KHa Keith Harrison, KH Kirsten Hunter, SL Sabrina Luecht, RL Rob Lawrence, LP Leigh Percasky, SP Sheila Petch, KR Kenny Rose, JS Joy Sagar, PS Paul Sagar, SS Sam Scheibel, NW Noel Ward, HW Hazel Watson, JW Jill West, PW Peter Wilson.

Canterbury Region Contacts

Regional Representative: Jan Walker
305 Kennedys Bush Rd, Christchurch
8025

Ph 322 7187

Email: shesagreen@gmail.com

Secretary: Sandra Wallace
31 Westmont Street, Christchurch 8041
Ph 358 5706

Email: sandraw67@gmail.com

Regional Recorder: Nick Allen
11 Seagrave Place, Christchurch 8041
Ph 03 358 5994

Email: nick_allen@xtra.co.nz

Education and Outings Officer: Bev
Alexander

63 Golding Ave, Rangiora 7400
Ph 03 313 7009

Email: birdiebev@xtra.co.nz

Treasurer: John Allan
67 Clifton Terrace, Christchurch 8081
Ph 326 4966

Email: johnruth@xtra.co.nz

The Wrybill Editor: Eleanor Gunby
31 Westmont Street, Christchurch 8041
Ph 358 5706

Email: eleanor.gunby@gmail.com

the previous sale.

ACCLIMATISATION.—Yesterday the Rangiora portion of the recently imported birds were taken by rail, under the charge of one of Mr J. C. Boys' men, for the purpose of being liberated. The lot comprised 13 hedge sparrows, 12 blackbirds, 20 starlings, 30 redpoles, and 6 thrushes. The consignment to Mr Perry, for Timaru, which includes 12 blackbirds, 6 thrushes, 30 redpoles, 14 hedge sparrows, and 26 goldfinches, will be taken in the s.s. Beautiful Star, under charge of Mr Deans, the curator of the Otago Society. The pair of golden pheasants in the gardens have commenced to lay, and the English pheasants recently brought out by Mr A. E. Alington, have been presented by him to the society. They will be a great acquisition, as affording a change of blood.

GAOL RETURNS.—The chief gaoler's returns

This is a short extract on the introduction of birds in Rangiora from *The Star* on March 5 1873.

CANTERBURY WADER COUNT JUNE 2016

Species	Waipara RM	Ashley/S'water Crik Est	Taranaki Creek paddocks	Waimakariri Bridges	Brooklands Lagoon	Travis Wetland	Avon- Heathcote Estuary	Lyttelton Harbour	Port Levy	Okains Bay	Le Bons Bay	Akaroa Harbour	Lake Forsyth	Tip of Kaitorete Spit	Kaitorete Spit	CCC Reserve	Birdlings B	Kaituna Lagoon	Halswell Flats B	Halswell Flats A	Osbornes	Greenpark Hufs-Jarvis Road
Counters/NC	NA	JW	JW	AC	AC	KR,JS,PC	AC	PC	PC	PC	PC	PC	PC	PC	PC	PC	KR	AC,KR	AC	KR	JW,DH,CD	JW,DH,CD
Notes																					nil count	
Date counted	6-Jul	1-Jul	1-Jul	22-Jun	22-Jun	21-Jun	27-Jun	23-Jun	29-Jun	29-Jun	29-Jun	29-Jun	25-Jun	25-Jun	25-Jun	25-Jun	25-Jun	25-Jun	25-Jun	25-Jun	25-Jun	25-Jun
Aus Crested Grebe													63					1	4			
Mute Swan																				1		2
White Heron					1		1						1				1	1	2			
Little Egret													1									
Cattle Egret																						
Royal Spoonbill		6			8		15	2					6	1	1			12	32			
Pied Oystercatcher	7	120	40		32	5	2063	203	36	26	4	161	1	2		14	2	2				30
Variable Oystercatcher		5			6		104		5	6	6	18	7									
Hybrid Oystercatcher		3																				
Pied Stilt		14			70	48	98	94		10	4	21	187	11	3	54	8	2	48	21		9
Black Stilt		1																				
Hybrid Stilt																						
Banded Dotterel		6		16	37		66						31	87	22	203	7		14	48		10
Black-fronted Dotterel																						
Wrybill																						
Spur-winged Plover		18	3	14	62	13	44	26	8	3	8	3	80	16	9	36	48	66	18	22		9
Turnstone																						
Lesser Knot							1															
Curlew Sandpiper																						
Red-necked Stint																						
Whimbrel							1															
Bar-tailed Godwit		29			68		194	18														
Hudsonian Godwit							1															
Black-billed Gull		12											42									71
White-winged Tern							1															
Gull-billed Tern																			1	1		
Black-fronted Tern	72	120					9							2								
Caspian Tern	6	13		1	4		8	2			2	9	10	1					1	1		
White-fronted Tern	9	94												2								
Site totals	94	441	43	31	288	66	2606	345	49	45	22	205	428	131	131	307	66	84	120	94	0	131
Wader site totals	7	196	43	30	275	66	2571	341	49	45	22	203	306	116	116	34	65	70	80	91	0	58
% of total count	0.12	3.28	0.72	0.50	4.60	1.10	42.97	5.70	0.82	0.75	0.37	3.39	5.11	1.94	1.94	0.57	1.09	1.17	1.34	1.52	0.00	0.97
# wader species at site	1	8	2	2	6	3	8	4	3	4	4	4	5	4	4	3	4	3	3	3	0	4

Grahame Bawden = GB Nick Allen = NA Bev Alexander = BA Peter Wilson = PW Jan Walker = JW Andrew Crossland = AC Kenny Rose = KR Phil Crutchley = PC John Skilton = JS
 John Allan = JA Joy & Paul Sagar = J&PS Hugh & Uschi Cable = H&UC Ryan Brooks = RB Duana, Una & William Harland = D&U&WH David Hunter = DH Clare Dukes = CD Alan
 Reese = AR

Lake Ellesmere level 4/7/16 = 1.11 m, closed

Species	Jarvis- Embankment Rds	Embankment Rd	Yarls Flat	L/I RM to Selwyn Huts	Rennie's Bay	Inwell RM	Drain Road	Harts Creek	Timberyard Point	Johnston's Bay	Lower Lake Road Flats/Paddock s	Rushbrooks Road	Fishermans Point	Subtotal Lake Elesmere	Coopers Lagoon	Spider Lagoon	Cnr Prattleys & White Roads	Opihi RM	Washdyke Lagoon	Ki-Wainono	TOTAL	
Counters/NC	JA,H&UC	GB,AF,D&U&WH	NA,RB	NA,RB	n/c	n/c	BA,PW	AR	BA,PW	n/c	BA,PW	BA,PW	BA,PW		BA,PW	J&PS	J&PS	J&PS	J&PS	PS		
Notes																		closed & high		v high		
Date counted	25-Jun	25-Jun	25-Jun	25-Jun	25-Jun	25-Jun	25-Jun	26-Jun	25-Jun	25-Jun	25-Jun	25-Jun	25-Jun		25-Jun	28-Jun	28-Jun	28-Jun	24-Jun	30-Jun		
Aus Crested Grebe														5	1						69	
Mute Swan			8				2						2	15	8						23	
White Heron			1				1		1					7							10	
Little Egret														0							1	
Cattle Egret							13							13							13	
Royal Spoonbill								1						47		2					86	
Pied Oystercatcher			3	1							4	3		61		5	19		4	10	2797	
Variable Oystercatcher														0		1				18	176	
Hybrid Oystercatcher														0							3	
Pied Stilt	40	128	1	23				12			186			546	16		85	33	74	39	1339	
Black Stilt														0			1				2	
Hybrid Stilt														0			1				1	
Banded Dotterel	132	14									52			589			31			23	1	800
Black-fronted Dotterel														0		5					5	
Wrybill	1													1							1	
Spur-winged Plover	5	38		35							36	6		344	2	5	48	17	40		738	
Turnstone														0							0	
Lesser Knot														0							1	
Curlew Sandpiper														0							0	
Red-necked Stint														0							0	
Whimbrel														0							1	
Bar-tailed Godwit											1			1							310	
Hudsonian Godwit														0							1	
Black-billed Gull	20								32				5	128	12		164			6	364	
White-winged Tern														0							1	
Gull-billed Tern														2							2	
Black-fronted Tern														2			18				221	
Caspian Tern														13							58	
White-fronted Tern														2							105	
Site totals	198	180	13	59	0	0	16	13	33	0	279	9	7	1871	39	18	367	54	171	40	7223	
Wader site totals	178	180	4	59	0	0	0	12	0	0	279	9	0	1351	18	16	185	54	165	40	5983	
% of total count	2.98	3.01	0.07	0.99	0.00	0.00	0.00	0.20	0.00	0.00	4.66	0.15	0.00	22.58	0.30	0.27	3.09	0.90	2.76	0.67	100.00	
# wader species at site	4	3	2	3	0	0	0	1	0	0	5	2	0	6	2	4	6	3	5	2	11	

ASHBURTON LAKES MID-WINTER BIRD COUNT

	L. Heron	Emily	E Maori	W Maori	Trinity	Denny	Emma	Roundabout	Spider / Donn	Nursery	Camp	Clearwater	Lambies	Barossa paddocks	Totals
Date 16.7.2016					No count this year	No count this year									
%Ice									0						
Crested grebe	10	2									2	4			18
Black shag	1		1								1	2			5
Little shag	41						38				2	12			93
White-faced heron	4								4						8
Bittern															0
White heron															0
Black swan	169	10	46	5			265	95			7	23		2	622
Canada goose	76	10	130	31			18	13				17			295
Paradise shelduck	484	16	28	16				14	5		2	2	2		569
Mallard	378	30	16	65			35	8			10	112			654
Grey duck	9														9
NZ shoveler	52							3				4			59
Duck spp															0
NZ scaup	1394		75	4			140					345			1958
Grey teal	8										4				12
Pukeko															0
Coot	130														130
Pied oystercatcher															0
Pied stilt	1														1
Spur-winger plover	7		9				1	11	2		2		2		34
Banded dotterel															0
Black-fronted tern		1					3					2			6
White-fronted tern															0
Black-billed gull															0
Back-backed gull	53		2									2		20	77
Falcon															0
Harrier	2		1				1	1							5
Kingfisher															0
Swallow															0
NZ pipit	2														2
Totals	2821	69	308	121	0	0	501	145	11	0	30	525	4	22	4555

Weather: Fine, mostly calm